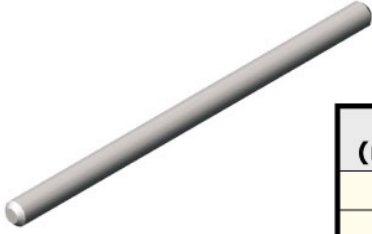
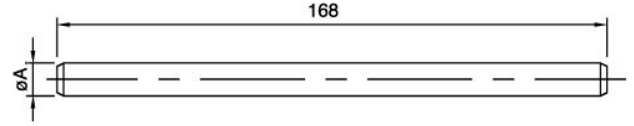


FOTSEL TUTMA MİLİ/PHOTOCELL ROD

M SS AISI 304



A (mm)	Stok Kod Stock Code	
10	214 154 010	100
12	214 154 012	100

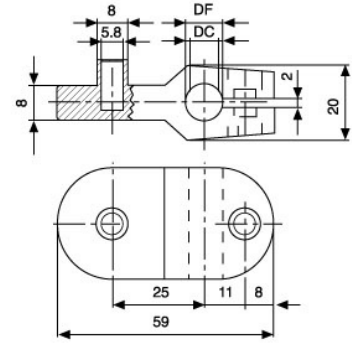


FOTSEL TUTMA MENGENE-2/PHOTOCELL CLAMP-2

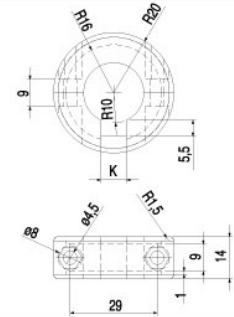
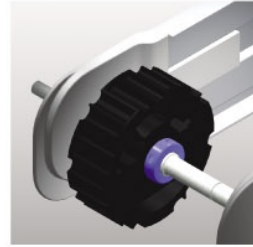
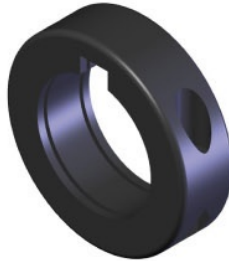
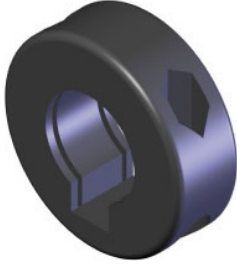
M PA



DF	DC	Kg	Stok Kod Stock Code	
10	8	0,03	214 IFM 010	120
12	10	0,03	214 IFM 012	120

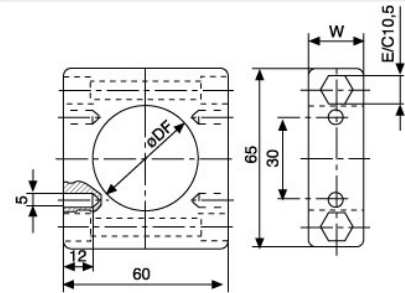
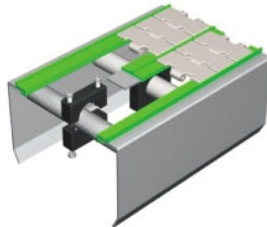


AYRIK TASMLAR YUVARLAK TİPİ/SPLIT COLLARS TYPE ROUND



Renk Colour	M	DF	DE	DP	W	K	Kg	Stok Kod Stock Code	
Siyah/Black	GüçlendirilmişPolyamid Paslanmaz Çelik Reinforced Polyamide Fastener in Stainless Steel	20	40	29	14	8,5	0,02	800 235 350	100
		25	45	35	14	8,5	0,02	800 235 351	100
		30	55	45	16	8,5	0,03	800 235 352	60
		35	55	45	16	8,5	0,03	800 235 353	60
		40	64	51	18	8,5	0,04	800 235 354	40

AYRIK TASMLAR KARE TİPİ/SPLIT COLLARS TYPE SQUARE



Renk Colour	M	DF	DE	DP	W	Kg	Stok Kod Stock Code	
Siyah/Black	GüçlendirilmişPolyamid Reinforced Polyamide	38	-	-	20	0,06	800 235 361	50

Özel üretim yapılır. / On request by manufactured.